

# DOOR LOCKS

## MARBELLA



### INSTALLATION GUIDE

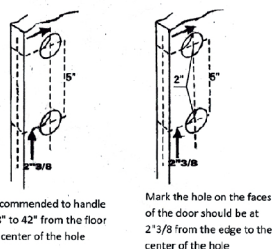
71299

#### Installation instructions

##### 1. Mark door

Use the enclosed installation template to mark the holes on the door

At the edge of the door mark to make a hole 1" diameter at the center of the ridge.



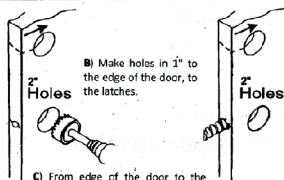
It is recommended to handle this 38" to 42" from the floor to the center of the hole

Mark the hole on the faces of the door should be at 2 3/8" from the edge to the center of the hole

##### 2. Perforations.

A) Make 2" holes in the mark made, passing through both sides of the door

Note: To avoid splintering the door, drill on both sides.

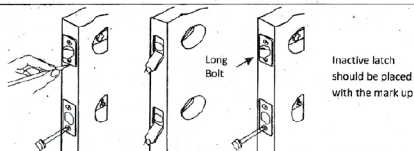


B) Make holes in 1" to the edge of the door, to the latches.

C) From edge of the door to the center of the hole should be a distance of 2" 3/8.

##### 3. Installing latches

Note: Make cuts for plates of latches



A) Place the latch in the holes made at the edge of the door, mark the outline of the plates

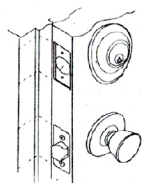
B) Make a recess to the edge of the door as the earlier trademarks, with a depth of 1/8"

C) Reattach latches and fix them with the screws, repeat the steps for both latches

##### 7. Install strikes plate

A) Close the door until the latch touches the frame and mark the plates of the latches on the framework as shown in the image

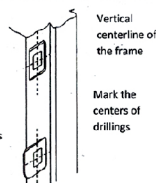
B) Focus the strike plate to the frame according to the marked above to match the holes in the latches with the frame



##### 8. Preparation of framework

Mark the outline of the striker plate and the inner hole of each one, focus the strikers plate hole as shown in the image

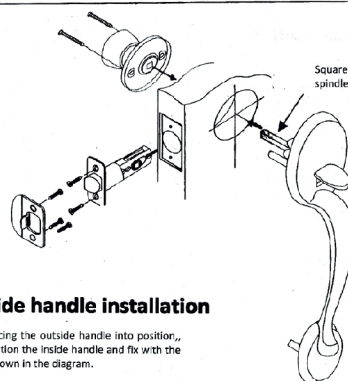
Mark the outline of the strikers plate



Vertical centerline of the frame

Mark the centers of drillings

##### 4. Diagram of the mechanism of handles



##### 5. Inside handle installation

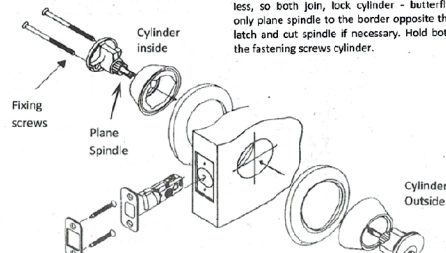
A) After placing the outside handle into position, place in position the inside handle and fix with the screws as shown in the diagram.

B) Place the screws into the holes in the inside handle and tighten.

##### 6. Deadbolt installation

A) Place the cylinder in the decorative rosettes and press against the door, make sure that the plane spindle of both cylinders are tightened properly.

B) The plane spindle from outside cylinder must be adjusted to the limit contrary the latch and plane spindle of the inside cylinder to the same direction but with a quarter-turn less, so both join, lock cylinder - butterfly, only plane spindle to the border opposite the latch and cut spindle if necessary. Hold both the fastening screws cylinder.



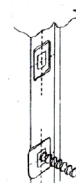
##### 9. Drilling and installation of strike plate

A) Make holes in the frame for the door buckle board of the strikes plate, hole 7/8" wide by 1 3/8" long and background

Note: It is recommended that the depth is greater than the above for a better installation.

B) Chisel the frame according to the outline marked in step 8 by 1/16" deep or until the strike plate are the same level of the entire framework.

Note: This chisel is not necessary if the gap between door and frame is greater than 1/8"



Place the strike plate to the frame and secure with wood screws

##### PARTS

- 1- Cylinder and decorative rosette
- 2- Outside Handle
- 3- handle or knob inside
- 4- Latch
- 5- Striker Plate
- 6- Fixing screws

