

# CERRADURAS

## TIPO EUROPEO

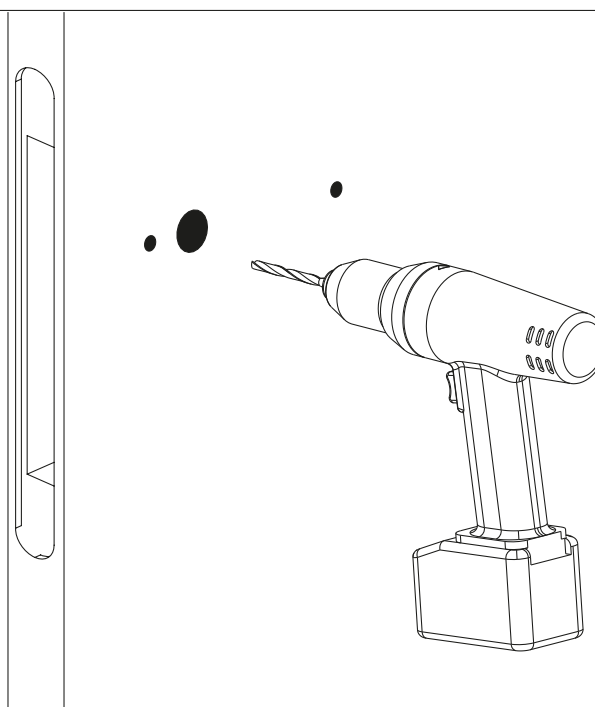
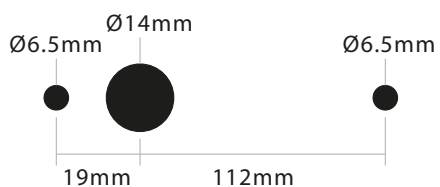
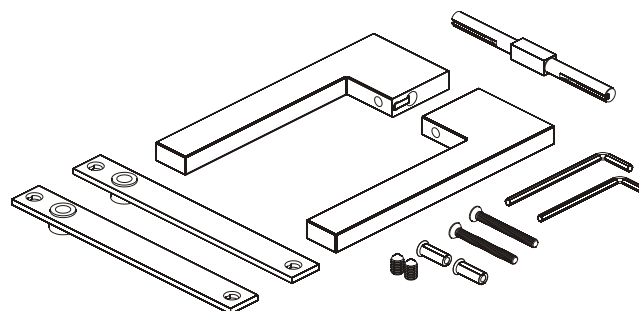
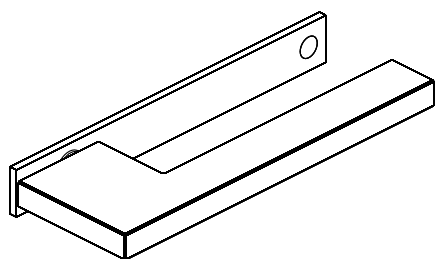
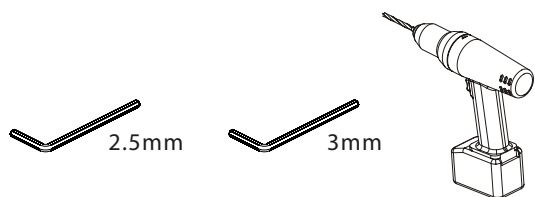


### Guía de Instalación

### JK00432.45

Formato sin escala

#### Herramientas necesarias



# CERRADURAS

## TIPO EUROPEO

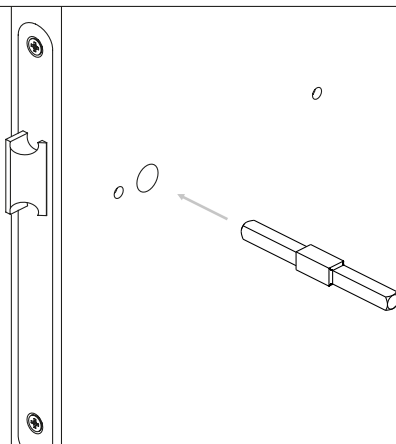


Guía de Instalación

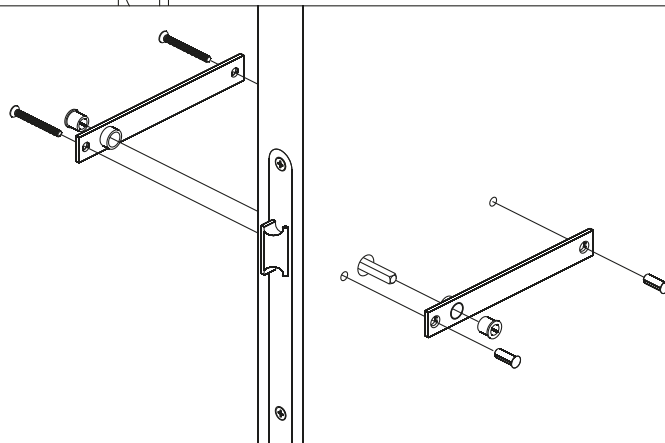
Formato sin escala

JK00432.45

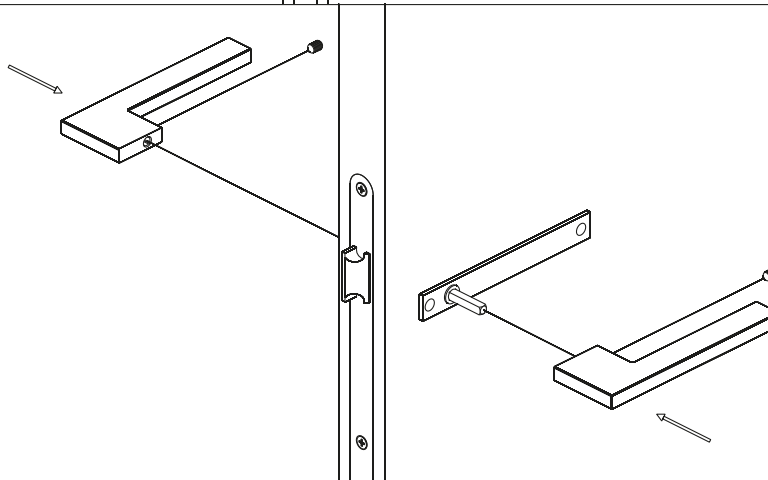
1



2



3



# CERRADURAS

## TIPO EUROPEO

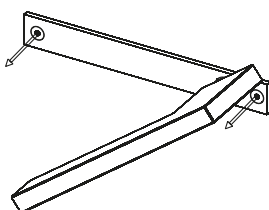


Guía de Instalación

Formato sin escala

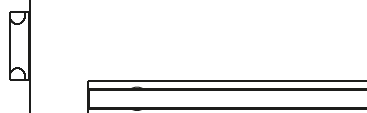
JK00432.45

4



Aflojar los tornillos

5



Alinear placa con manija