

DOOR LOCKS

EURO LEVER SETS

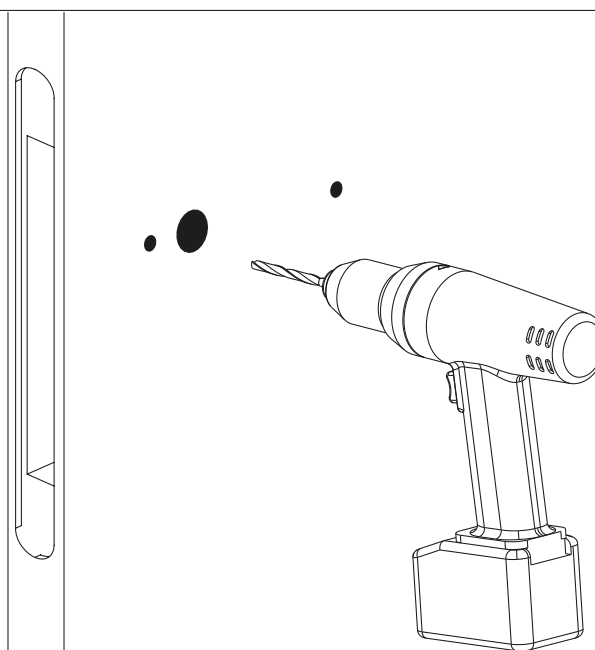
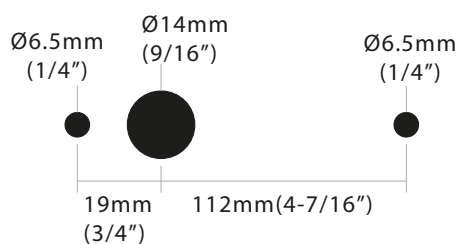
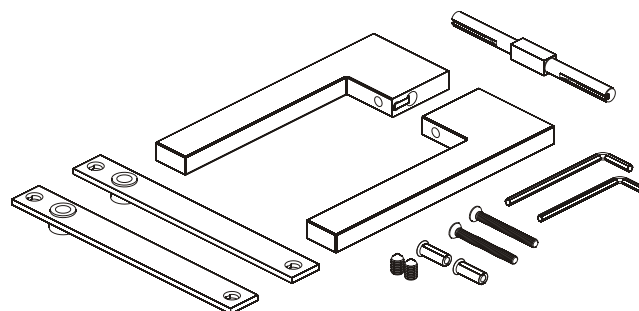
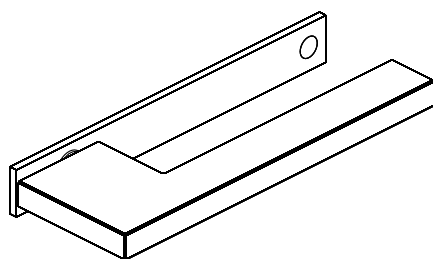
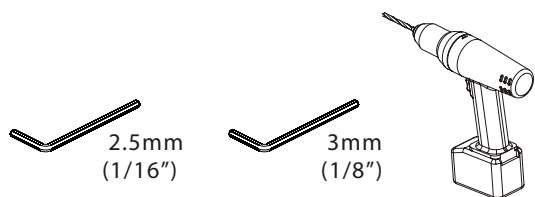


Intallation Guide

Unscaled format

JK00432.45

Tools necessary



DOOR LOCKS

EURO LEVER SETS

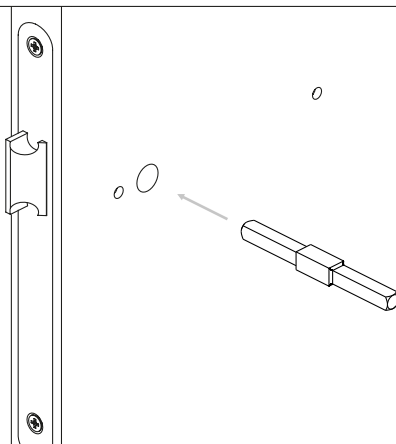


Intallation Guide

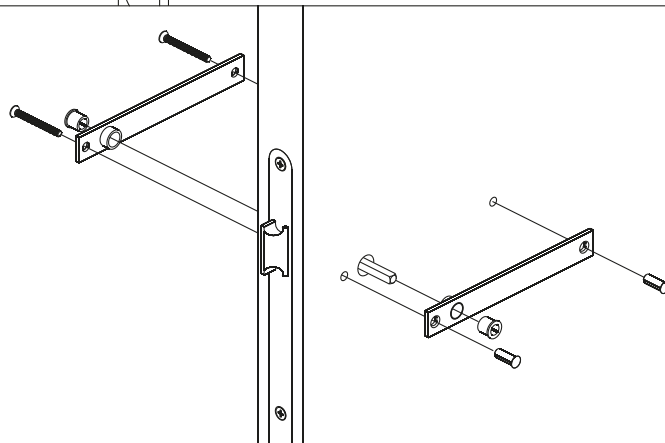
Unscaled format

JK00432.45

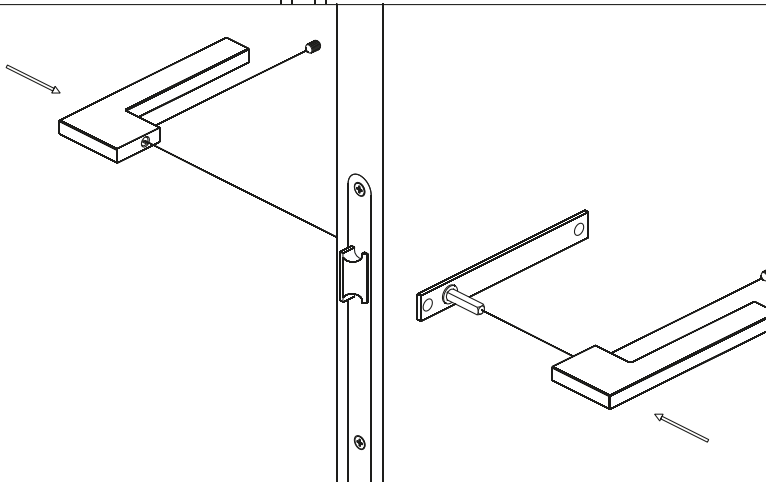
1



2



3



DOOR LOCKS

EURO LEVER SETS

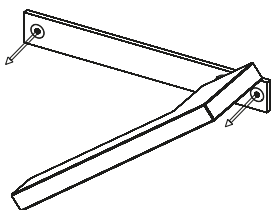


Intallation Guide

Unscaled format

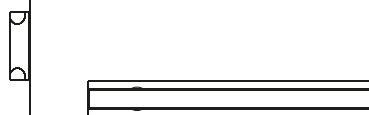
JK00432.45

4



Loosen screws

5



Align plate with handle and give the final screw tightening